

HAGLAND PREMIER

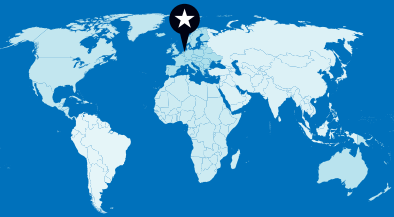
Contact this vessel: [+47 467 05 234](tel:+4746705234) // hagland.premier@hagland.com

VESSEL TYPE: Selfdischarger / boxhold

GT / NT: 3,052 / 1,685

IMO NUMBER: 9964077

FLAG / CALL SIGN: NIS / LAUB8



DIMENSIONS

LOA 86.93 m / LBP 84.98 m /
Beam 15.0 m / D 6.35 m



HOLD CAPACITY

214,307 cbft (6,068 m³) grain/bale



TIMBER CAPACITY

Abt. 3,800 solid cbm



GEAR

Electric Fuchs 890 cargo handler
mounted on gantry, fitted with grab for
bulk cargoes and logs. Bobcat for cleaning



SPEED & CONSUMPTION

Max 12.2 knots / Eco speed 11 knots

DWAT	4,929 mts
DWCC	4,800 mts
HOLD DIMENSIONS	1 hold: 57.785 m x 12.385 m x 8.646 m, HWLTHC 7.84m Two moveable bulk-heads
HATCH	Pontoon type
CAPACITIES	1,870 mt Ballast / 120 mt Bunkers / 32 mt FW
MAIN ENGINE / PROPULSION	Plug-in Battery Hybrid, M/E 1,800 kW Tier III, Pitch propeller in nozzle
AUXILIARIES	2 X 118 kW + 1 x 65 kW Electrical Power
SPECIAL FEATURES	1000 kWh battery. Shore connection Cavotec NEK IEC/ PAS 80005-3 (400-690 V), 2 connectors
CLASS	BV GENERAL CARGO SHIP - ELECTRIC HYBRID (PM, PB, ZE), AUT-UMS, MON-SHAFT, STRENGTHBOTTOM, BATTERY SYSTEM, INWATERSURVEY
BUILT	2023 at Royal Bodewes, Netherlands

All details are without guarantee

HAGLAND PREMIER

Contact this vessel: [+47 467 05 234](tel:+4746705234) // hagland.premier@hagland.com



LOADING SALT



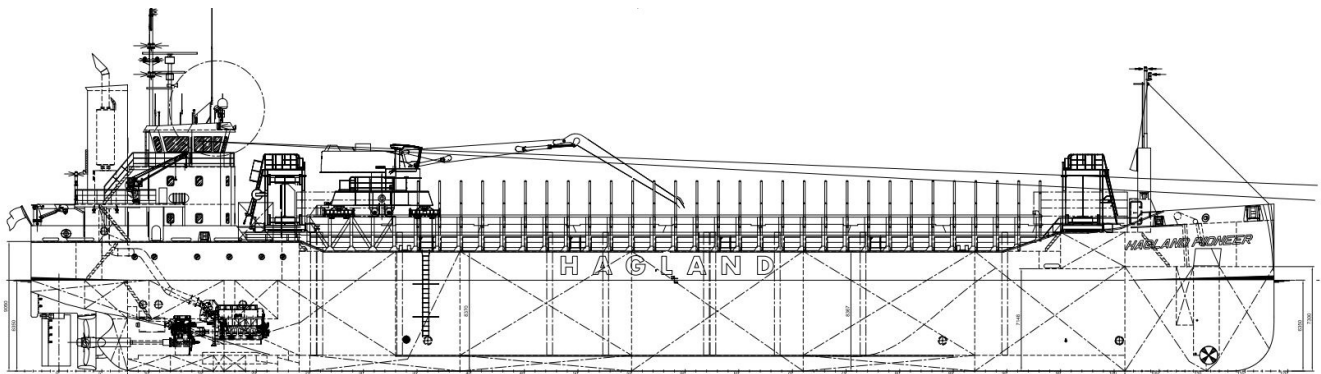
DISCHARGING SAND TO LORRIES



LOADED WITH TIMBER LOGS



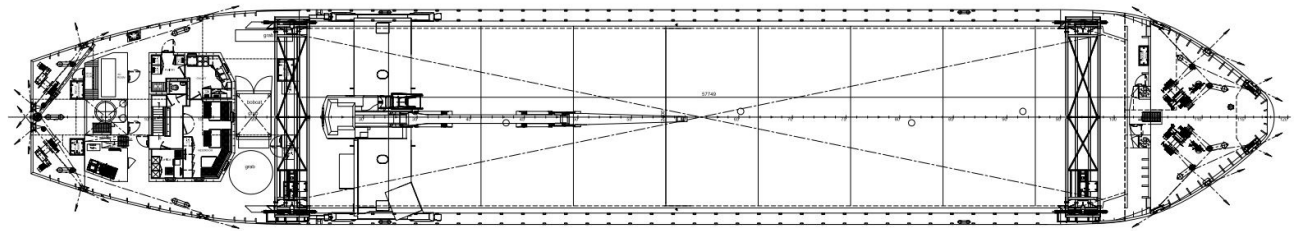
DISCHARGING GRAINS



MAINDECK AT 9050 A.B.

COAMING AT 9700 A.B.

FORECASTLEDECK AT 10125 A.B.



TWEENDECK 6350 A.B.

MAINDECK 8370 A.B.

CROSS SECTION

MAINDECK 8370 A.B.

FORECASTLE 7300 A.B.